

ELECTRONIC ARTS™



NEED FOR SPEED
HIGH STAKES

BASIC CONTROLS

Steer left/right



Accelerate



Brake/Reverse



Shift up/down



(Manual Transmission only)

Reset car after crash



For more information on game controls, ► *Default Driving Commands* on p. 13.

TABLE OF CONTENTS

INTRODUCTION	2
TAKING A SPIN	3
SETTING UP THE GAME	3
Game Setup Screen	3
Main Menu	4
Options Screen	9
ON THE TRACK	13
Default Driving Commands	13
Pause Menu	14
Race Summary Screen	15
CAREER PLAY	16
ADDITIONAL GAME MODES	21
Single Race Mode	21
Hot Pursuit	21
Knockout Mode	23
Tournament Mode	24
LOADING SAVED GAME FILES	25
MULTIPLAYER RACING	25
Split Screen Arcade Races	26
Network (IPX)	26
Network (TCP)	27
Internet	28
Modem	28
Serial Link	28
Multiplayer Main Menu	29
HOT KEYS	30
CREDITS	30



INTRODUCTION

Ready to take it to the next level? Then you've come to the right place. *Need For Speed™: High Stakes* places you in the driver's seat of some of the world's most desirable vehicles. Ever wonder what it would be like to roar down the street in a Lamborghini Diablo SV or a Porsche 911 Turbo? Well wonder no more as you'll find these and many more sweet rides to cruise in.

Then, after you've put these bad boys to the test, begin a racing career and enter a circuit to win cash prizes. With your winnings you can purchase better cars or upgrade your current ride to create a true dream machine. Then, if you've got the guts, put it all on the line in a battle for pink slips. Clearly, the stakes have never been higher!

- ❖ **NEW! Licensed Supercars**—Race your favorite dream cars.
- ❖ **NEW! Complete In-Game Economy**—Win races to earn money, buy new cars, and customize your exotics.
- ❖ **NEW! High Stakes Racing**—Lose the race, lose your car.
- ❖ **NEW! 19 Challenging Courses**—Race a variety of exotic locations.
- ❖ **NEW! Real Car Damage**—Affects car handling and appearance.
- ❖ **NEW! Multiplayer Racing**—Challenge a friend via LAN, Modem, Serial Cable, or the Internet.
- ❖ **Downloadable Cars**—Watch for additional supercars posted on EA's website, then download and race the new machines in NFS: High Stakes.

For *Need for Speed: High Stakes* news and updates, visit the official *NFS: High Stakes* website at www.needforspeed.com.

FOR MORE INFO about this and other titles, check out EA on the web at www.ea.com.

ELECTRONIC ARTS RECOMMENDS that drivers always wear seatbelts, observe the law, and never drive while intoxicated.

TAKING A SPIN

Can't wait to get going? Then quickly hit the road and put one of these supercars to the test!

To begin a race:

1. From the Game Setup screen, click SINGLE PLAYER ARCADE. The Race Type overlay appears.
2. Click SINGLE RACE. The Name Entry box appears.
3. Type your name and press **[ENTER]**. The Main menu appears.
4. Click RACE. The race loads.

When the announcer counts down "3...2...1...GO!", hit the accelerator and see what your machine can do.

SETTING UP THE GAME

GAME SETUP SCREEN

When you load the game, the Game Setup screen appears.

NOTE : For installing and loading instructions, please see the enclosed Reference Card.

Compete for virtual cash and prizes in Career Play mode (► *Career Play* on p. 16)

Hone your driving skills in a single player race of your choice

Go head to head with a competitor in a two player split screen battle (► *Multplayer Racing* on p. 25)

Challenge a friend through a network connection (► *Multplayer Racing* on p. 25)

Access the Load screen (► *Loading Saved Game Files* on p. 25)

View the game credits

Access the *NFS: High Stakes* website

Exit the game



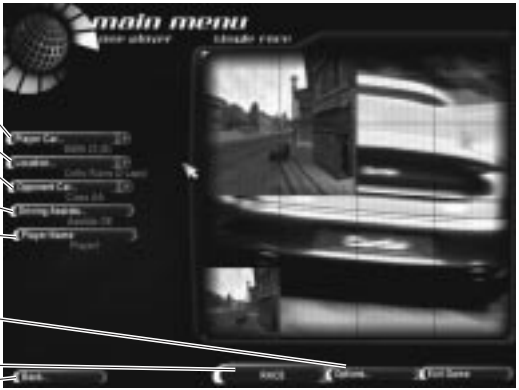
- ⇒ To make a selection from any *NFS: High Stakes* menu screen, move your cursor to the menu item and left-click.
- For information on specific race types, ► **Additional Game Modes** on p. 21.

NOTE : Default settings in this manual appear in bold type.

MAIN MENU SCREEN

This is where your *Need For Speed* race setup begins.

- Select your car (► *Player Car Screen* below)
- Select a track (► *Location Screen* on p. 7)
- Select the car(s) you want to challenge (► *Opponent Car Screen* on p. 8)
- Adjust driving assistance options (► *Driving Assists Screen* on p. 8)
- Enter a driver name. *NFS: High Stakes* tracks your race performance by this driver name.
- Set game options (► *Options Screen* on p. 9)
- Start the game
- Return to the Game Setup screen



⇒ Whenever you see a ►, click it to access a cascade menu.

Player Car Screen

Transmission

Choose an **AUTOMATIC** transmission for no-hassle, accelerate-and-steer driving or a **MANUAL** transmission where your performance shifting can take advantage of every ounce of torque.

Color

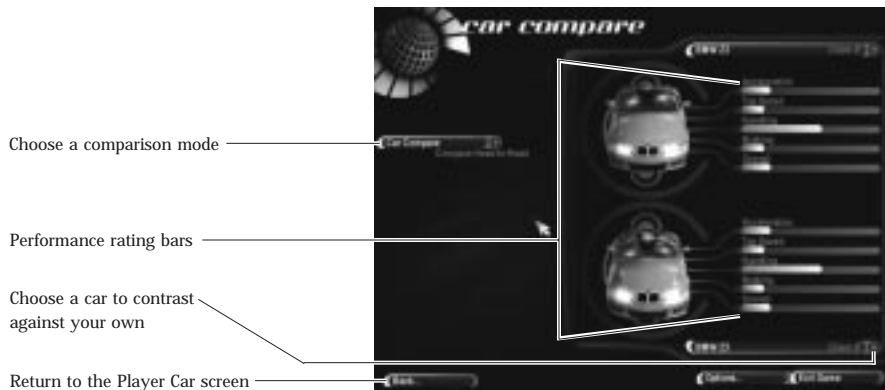
Paint your machine. In addition to the hues provided, you can select **CUSTOM** to create virtually any color you want.

To create a custom color:

1. Select CUSTOM from the Color cascade menu. The paint palette appears.
2. Move the vertical slider to the general color you want, then use the mouse or arrow keys to position the color selector on a specific color.
3. Click PREVIEW to view the color on your car.
4. When you're happy with the final product, click ACCEPT.

Car Compare

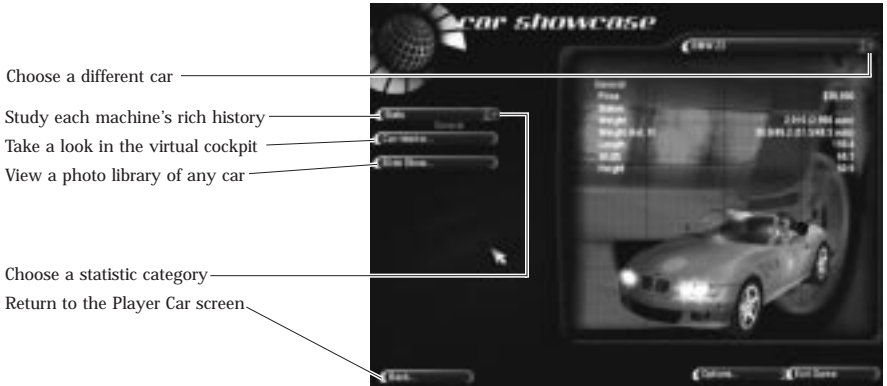
Compare your car with others in its class, head-to-head against any model in the game, or in a group with every car.



- Car classes are based on Acceleration and Top Speed performance ratings.

Showcase

Enter the Showcase screen to get an in-depth look at what's under the hood of your dream machine.



At the Car Interior screen you can use on-screen tools to move the image in any direction.

Convertible

Certain cars have a convertible option. Toggle between **TOP UP**/TOP DOWN to adjust your ride.

Car Tuning

Use the sliders to adjust your car setup in each tuning category.

⇒ To return the car to its factory settings, click RESET DEFAULTS.

⇒ To return to the Player Car menu, click DONE.

Engine Tuning

Tune toward the low end for faster acceleration on tracks with tighter turns or to the high end for more top speed on tracks that allow it.

Brake Balance

Tuning to the front creates an understeering car by transferring weight to the rear during braking. Tune to the rear for an oversteering car.

Steering Speed

Set this option slower for more gradual turning or quicker for fast, twitchy steering.

Gear Ratios	Low gear ratios let your car climb through the gears quickly, spending less time in the slower gears. High gear ratios trade sluggish starts for top speed.
Suspension	A car with a soft suspension rolls into the turns. A car with a stiff suspension fights the road but gives you a better feel for it.
Aerodynamics	Tune lower for more downforce, increasing handling but reducing speed, or higher for less wind resistance.
Tires	Rain tires move the water to grip the road under wet conditions. Racing tires have smooth surfaces that stick to dry roads and slip on wet ones.

NOTE : Car Tuning only applies to Single Player Arcade races.

Download Car

In addition to the array of cars contained within *NFS: High Stakes*, you can also find additional dream machines online.

To Download a Car:

1. Click **DOWNLOAD CAR**. A prompt appears asking if you want to close the game and launch your web browser.
2. Click **YES** to continue. Your internet browser opens to the *Need for Speed* homepage where instructions guide you through the download process.

Location Screen

Select track options for your race

Laps	Select the number of laps to race (2 , 4, or 8).
Direction	Toggle to race FORWARD/BACKWARD .
Mirrored	Toggle OFF/ON .
Night Driving	Toggle OFF/ON .
Weather	Toggle OFF/ON .
Track Records	View a list of your best times for the course.
Start Presentation	View a video summary of track information.



Opponent Car Screen

- Opponent Skill** Set the skill level for your opponents (AMATEUR, **PRO**, CHAMPION).
- Number** Select the number of cars to race against (0–6, or FULL GRID)
- Traffic** Toggle ON/**OFF** to play with moving obstacles.
- Car Compare** ➤ *Car Compare* on p. 5.
- Showcase** ➤ *Showcase* on p. 6.
- If you're racing against a full grid, you can choose to race against a pack of identical computer cars by choosing a specific car from the Opponent Car Class menu. You can also choose to race against randomly chosen cars from within a class by choosing one of the general Car Class options.

NOTE : The Traffic option is unavailable if the Opponent Number is set to FULL GRID.

Driving Assists Screen

Driving Assists make it easier to get around the track at high speed. Assists are available only in Single Race and Hot Pursuit modes.

TIP If you're new to *NFS*, these driving assists will help you master the *NFS: High Stakes* tracks and race competitively against your friends in multiplayer modes.

- Braking** With the braking assist option ON, your brakes react more effectively.
- Collision Recovery** Set collision recovery ON for faster accident recovery.
- Traction** Traction assist keeps your tires from spinning when you generate excessive torque. This enables the car to hug the road for faster cornering and quicker starts.
- Pursuit** Available in Hot Pursuit mode only. When ON, pressing the Reset button after you make a bust causes your car to teleport up to the leader, so you have a good chance of busting him too.
- Damage** Choose the effect that accumulated damage has on your car. When OFF, damage does not affect your car's appearance or handling.

OPTIONS SCREEN

Each item listed on the Game Options screen leads to its own screen.

Audio Screen

Menu Music	Set the volume level of menu music.
Racing Music	Set the volume level of in-game music.
Sound Effects	Set the volume level of the sound effects.
Engine Volume	Set the volume level of engine sounds.
Speech Volume	Set the volume level of the announcer.
Music Type	Select to play GAME MUSIC or insert an AUDIO CD of your choice to hear your favorite tunes.
Audio Mode	Choose the best sound mode supported by your system.
Racing Tune	Sample and select your favorite song played during a race or choose RANDOM .
Menu Tune	Sample and select your favorite song played during the menu screens or choose RANDOM .
Audio Test	Run a sound test for your speakers.

Controllers

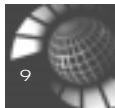
Access the Controllers menu to view the command button for each racing action. You can remap the buttons if the default configuration doesn't feel right with your racing style.

- To assign a command button/key, click the action you want to change, then press the button/key you want to assign to it.
- To reassign a command to an axis, do one of the following:

Half Axis Assignment Procedure

To assign half the range of an axis to a command:

1. Place the axis control in its center position.
 2. Click the action you want to change.
 3. Move the axis from its center position to one extreme.
- You can assign the other extreme to another command.



Full Axis Assignment Procedure

To assign the full range of an axis to a command:

1. Place the axis control all the way to one extreme of its range.
2. Click the action you want to change.
3. Move the axis to the opposite extreme.
 - To reverse the direction, begin again with the axis at the opposite end of its range.

Dead Zone To expand or reduce your controller's dead zone, click and drag the beads in the middle of the axis bars. The dead zone is the range you can move your controller before it affects your car's performance.

Force Feedback *NFS: High Stakes* takes full advantage of force feedback controllers. Move the sliders to adjust the level of feedback put forth by individual driving forces.

Audio Feedback Map three numerical keys for audio feedback on your current race status. This feature is especially helpful when driving with the HUD (Heads Up Display) turned OFF.

Function Keys Get familiar with the function key commands that allow you to change camera angles or toggle some options ON/OFF during gameplay. You cannot remap function keys.

Pre-Defined Keys Take the time to learn these useful functions. You cannot remap the pre-defined keys.

- To return all options to original settings, click RESET TO DEFAULTS.

Cameras

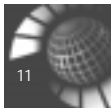
During a race, you can cycle through four cameras. Use the Camera menu to set your four favorite angles as the default camera views.

- To configure camera views, click each camera button to toggle selections, or access the cascade menus, and click the views you want.

Graphics


NFS: High Stakes defaults the Graphics options to the optimum settings for your computer system. If you want more graphic detail, set the options to the highest levels. If you want the game to run faster on your computer, try reducing some detail.

Screen Size	For optimum graphics, choose the highest resolution supported by your video card. Screen sizes followed by (z) will run, by default, with the Z Buffer option ON.
Triple Buffer	Allows 3D video cards to use more memory and increase frame rate.
Wide Screen	Toggle ON to play with wide screen display view.
Car Chrome	Chrome gives your car a brilliant, reflective sheen. Toggle ON/OFF .
Car Shading	Shading gives depth to your car's contours. Toggle ON/OFF .
Car Detail	The higher the detail the more realistic your car's appearance. Set HIGH , MEDIUM , or LOW .
Special Effects	Special effects add a real-world element to the race. Set HIGH , LOW , or OFF .
Horizon	The horizon completes the landscape. Set HIGH , LOW , or OFF .
Advanced Settings	Access a host of extra options.
Gamma Correction	Use the slider to adjust the brightness of your screen.
View Distance	Determines how far the landscape is drawn. With FULL , the entire landscape appears. With CLOSE , the landscape is drawn just as you drive into it.
Z Buffer	Set Z Buffer ON for the smoothest graphics.
View Angle	Choose a NARROW angle to focus the view on your car or WIDE to bring more landscape into the picture.
Headlights	VERTEX headlights brighten the general area in front of your car. PROJECTED headlights focus strong beams of light on the road, illuminating your path.
Perspective	Adjust the view cone.
Fog	Toggle this special effect ON/OFF .
Lens Flare	Toggle this special effect ON/OFF .



Heads Up Display

The Heads Up Display, often referred to as the HUD, is the array of gauges on the screen during the race. Most gauges offer multiple settings, or you can toggle all gauges OFF to clear your view of the track.



The screenshot shows a 'heads up display' settings menu. On the left, there is a list of settings with arrows pointing to them from the text on the left. The settings include: 'Screen Layout', 'Speed', 'RPMs', 'Damage', 'Map', 'Lap Time', 'Current Lap', and 'Rear View Mirror'. At the bottom of the menu are 'Done' and 'Cancel' buttons. The background of the menu shows a blurred racing track.

- Reposition your gauges
- Display speed in mph or km/h on a digital or analog gauge
- Display RPMs with a digital or analog gauge
- Gauge the level of damage to your car
- Toggle the map ON/OFF
- Choose what your current lap time is measured against.
- View a summary of opposing racers
- Toggle the rear view mirror ON/OFF

NOTE : Some gauge settings are available only in certain Screen Layouts.

Load

► *Loading Saved Game Files* on p. 25.

ON THE TRACK

DEFAULT DRIVING COMMANDS

This section contains default driving commands assuming that the keyboard is your controller. If you're using a different game controller, *NFS: High Stakes* detects it and defaults to it. To view or configure your driving commands, select CONTROLLERS from the Options menu for equivalents.

Click an opponent's name or map icon to view the race from that driver's point of view. To return to your car's view, right-click anywhere.



- To **accelerate**, press .

TIP Don't rev the engine too much before the race starts. If your tach is too high when your car shifts into first, you'll burn your tires and lose valuable ground.

- To **steer** left/right, press /.
- To **brake**, press . To back up, hold after your car comes to a complete stop.

NOTE: To set the Auto-Reverse function, you must map the setting on the Controllers menu. ► *Controllers* on p. 9.

- To pull the **handbrake**, press . Use this for tight hairpins and power braking at high speeds.

TIP Just for fun, you can use the hand brake to pull spinouts and 360°'s.

- To **shift** up/down, press **[A]/[Z]**.
- To cycle through camera **views**, press **[C]**.
- To **look behind** you, press and hold **[B]**.
- To honk your **horn**, press **[H]**. (In Hot Pursuit mode, this triggers your **siren**.)
- To cycle your **headlights** ON, OFF, HIGHBEAMS, press **[L]**.
- To quickly **reset** your car after a crash, press **[R]**.

Hot Pursuit Controls

The following commands are only used for Hot Pursuit mode. ► *Additional Game Modes* p. 21.

- To call a **wingman**, press **[W]**.
- To cycle to the **next cop**, press **[N]**.
- To **jump** to any cop car, press **[J]**.
- To drop a **spike strip**, press **[S]**.
- To direct your wingman set up a **road block**, press **[K]**.

PAUSE MENU

You can access the Pause menu at anytime to take a break or adjust options.

- To pause a race, press **[ESC]**. The Pause menu appears.

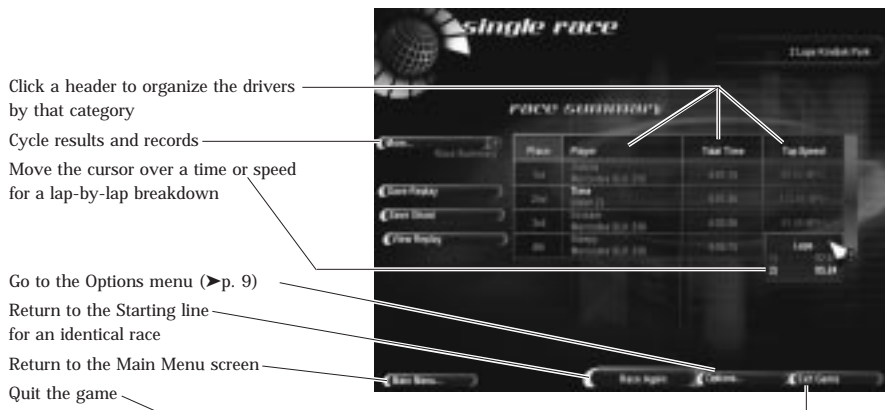
Audio	Use the sliders to adjust all sound options.
Controls	View and/or remap driving controls. ► <i>Controllers</i> on p. 9.
Cameras	Assign the camera views. ► <i>Cameras</i> on p. 10.
Graphics	Set graphics options. ► <i>Graphics</i> on p. 11.
Heads Up Display	Customize the on-screen gauges. ► <i>Heads Up Display</i> on p. 12.
Continue	Get back to the racing action.
Quit	Abort the current race. (Choose to go to the Main menu, the Post Race screen, or the Windows® operating system.)

While your race is paused, you can use the function keys to get a good view of the game environment. This is especially useful if you want to adjust Graphics options from the Pause menu.

- To hide the Pause menu, press **[F1]**.
- To rotate the Pause screen image left/right, press and hold **[F2]/[F4]**.
- To pause/resume automatic Pause screen rotation, press **[F3]**.

RACE SUMMARY SCREEN

After a race, an automatic replay appears followed by the Race Summary screen.



- To save a replay of the race, click SAVE REPLAY, type a name to label it (your player name is the default), and press **[ENTER]**. To load the replay, ► *Loading Saved Game Files* on p. 25.
- To save a ghost of your race, click SAVE GHOST, type a name to label it (your player name is the default), and press **[ENTER]**. To load the ghost, ► *Loading Saved Game Files* on p. 25.

The ghost is your performance during the previous race. When you load a ghost, you run the same race again with a translucent car mirroring the line you drove. In this way, you can race against yourself.

NOTE : You cannot collide with the ghost car.

- To view the replay of the race again, click VIEW REPLAY. The replay follows your car from start to finish incorporating a variety of TV-presentation cameras.

CAREER PLAY

One of the new features of *NFS: High Stakes* is Career Play, which lets you enter a racing circuit and earn virtual cash and prizes. Each circuit is made up of a specific race type: Tournament, Knockout, or High Stakes. (► *Additional Game Modes* on p. 21.) The better you perform in the circuit, the more cash you earn. This cash can then be used to upgrade any cars in your garage or purchase higher-performance vehicles.

To begin a racing career:

1. Select CAREER PLAY from the Game Setup screen. The Name Entry Select/Create Profile box appears.
2. Type your name and press **[ENTER]**. The Showroom screen appears.

NOTE : You must purchase a car before you are allowed to begin your career.

Showroom Screen

The Showroom screen is the place to buy a dream car to compete with.

View a menu of available cars

View a complete account summary

Your current bank account

View the car specs

Access the Showcase screen

(► p. 6)

The car's price

Purchase the highlighted car

Access the Options screen

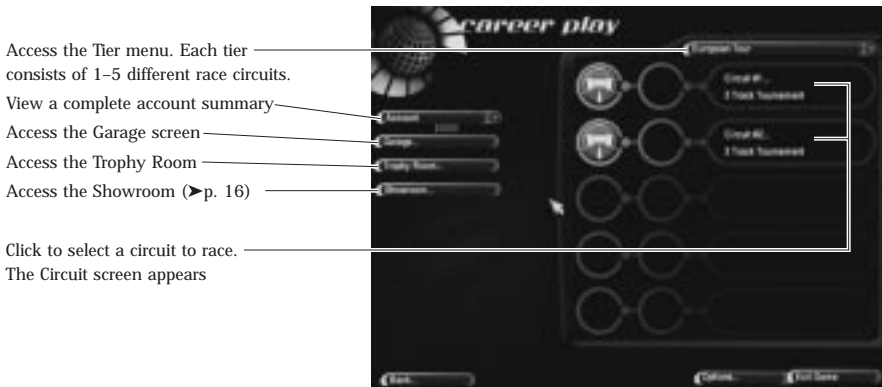
Access the Circuit Select screen

Exit the game



Circuit Select Screen

Select a racing circuit to compete in.



Circuit Types

Each circuit consists of 1-8 races. There are three types of circuits to compete in:

Tournament

This circuit type is comprised of a number of races. At the end of each race, points are awarded based on your finishing position. At the conclusion of the last race, the driver with the most points is declared the winner.

Knockout

This circuit type is also comprised of a number of races. However, after each race, the last place finisher is eliminated from the competition. The winner is declared through a process of elimination.

High Stakes

The ultimate circuit. In High Stakes, it's a one-on-one battle with a catch. You must put your dream machine on the line in a winner-take-all battle. You may only enter this circuit if you own two cars.

NOTE : Placing first in some tournaments will unlock a bonus car.

NOTE : To begin, only the European Tour tier is accessible. Additional tiers are unlocked by completing all circuits within the currently available tiers.

Circuit Racing Screen

The Circuit Racing screen contains valuable information about tour tracks, circuit standings, and purse prizes.

The screenshot shows the 'career play' menu with the following callouts:

- The skill level of the circuit (points to 'Skill Level')
- View a complete account summary (points to 'Account Summary')
- View the current circuit standings (points to 'Standings')
- Access the Garage screen (points to 'Garage')
- Access the Trophy Room (points to 'Trophy Room')
- Enter the Showroom (► p. 16) (points to 'Showroom')
- The tracks that comprise the circuit (points to 'Track List')
- The cost to enter the circuit (points to 'Entry Fee')
- Prize money (points to 'Prize Money')
- Race the circuit (points to 'Race Circuit')

NOTE : As soon as a player pays the entry fee to a circuit with new tracks, those tracks become available in all game modes.

Circuit Completion Awards

Players win medals for completing circuits and trophies for completing tiers.

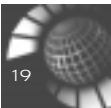
- You have completed a Tournament Circuit when you have finished in one of the top three positions. 1ST Place receives a Gold medal, 2ND Place a Silver, and 3RD Place a Bronze. All places receive money with more going to higher-placing finishers.
- You have completed a Knockout Circuit when you have finished all races without being eliminated. 1ST Place receives a Gold medal and all places receive money with more going to higher-placing finishers.

- You have completed a High Stakes Circuit when you have finished in 1ST Place. 1ST Place receives a Gold medal and the loser's car. 2ND place receives prize money.
- You have completed a tier when you have won a medal in all circuits of the tier. The Trophy type (Gold, Silver, Bronze) is equal to the lowest denomination of medal you receive.
- In all, there are 10 tiers and 30 circuits to compete in. You win when all 10 tiers have been successfully completed.
- Players are free to re-enter tiers or circuits they have already completed to win extra cash or upgrade their awards.

Garage Screen

Account	View a complete account summary.
Car Repair	Access the Repair Car screen (► p. 20.).
Upgrade	Access the Upgrade screen (► p. 20.).
Showcase	Access the Showcase screen (► p. 6.).
Transmission	Toggle between AUTOMATIC and MANUAL transmissions. A Manual transmission presents more of a challenge, but it allows you to squeeze more performance out of your car.
Convertible	Toggle between TOP UP/TOP DOWN .
Sell	Trade in your vehicle to accumulate some extra cash.

NOTE : You can only sell a car if you have more than one in your garage.



Repair Car Screen

Regular maintenance for your vehicle allows you to stay competitive on the circuit.

View a complete account summary — Account

Repair all body damage — Repair All Body Damage

Repair all engine damage — Repair All Engine Damage

Repair all suspension damage — Repair All Suspension Damage

Repair all steering damage — Repair All Steering Damage

Repair all damage — Repair All Damage

The car's ratings — Top Speed, Acceleration, Handling, Drift

Balance: \$1000

Repair All Gear Box

Repair All Damage

Back, Options, Exit Game

Car Upgrades Screen

Purchase new upgrades to enhance your car's performance.

View a complete account summary — Account

The upgrade description — Upgraded aerodynamic profile offers handling at high speeds. Weight reduction translates into higher top speeds.

The cost to purchase an upgrade — Upgrade Cost: \$1000

Vehicle ratings — Top Speed, Acceleration, Handling, Drift

Balance: \$474

Options, Exit Game

Car Upgrade Options

Level 1	Lowers suspension and upgrades your tires for improved road grip and handling.
Level 2	Improves aerodynamics to provide better handling and reduces weight for quicker acceleration.
Level 3	Tunes engine for improved acceleration and top speed. Upgrades brakes to reduce stopping distance.

ADDITIONAL GAME MODES

SINGLE RACE MODE

Single Race mode allows one or two players to participate in one complete race. Take this opportunity to learn the *NFS: High Stakes* tracks and discover the fastest route to the finish line, including shortcuts that help you compete against faster cars.

TIP If you're just getting started, you can make driving easier in Single races by turning ON Driving Assists.

Single Race Setup

Choose SINGLE RACE from the Race Type overlay, then configure your game at the Main menu, menu, and click RACE.

HOT PURSUIT

Play as a thrill-seeking civilian on the open roads, but beware of the local law enforcement authorities enforcing the speed limits as you race for the finish line. Or try your luck as an officer of the law, and use any means necessary to take down those who abuse the speed limit.

NOTE: Not all cars are available in Hot Pursuit mode.

When the cops give chase:

- Whether you are pulled over by force or voluntarily, you're busted. Valuable time ticks off the clock while they detain you.
- After getting busted too many times (depending on how many laps you're racing), they'll arrest you. If this happens, your game is over.

TIP Don't get overconfident. If you outrun the cops, they'll call in reinforcements with supercars that rival your machine.

When chasing a speeding car:

- Press **[H]** to switch on your siren and lights. The speeder is now targeted for pursuit and arrest.
- Use the force of your vehicle to pull the offender over, or get in front of him and press **[S]** to lay down the spike strip.
- ☐ If you are in Single Player Arcade mode, you can designate a cop as your "wingman" and give him direct orders. The wingman acts as your partner, helping you track down speeders.
- To select a wingman: press **[W]**.
- To direct him to set up a roadblock: press **[K]** after pressing **[W]**.
- To direct him to throw down a spike strip: press **[S]** after pressing **[W]**. The faster you catch a speeder, the more time you have to track down the next speeder.

TIP The best way to stop a speeder is by getting in front of the car and blocking its path.

Hot Pursuit Setup

Choose HOT PURSUIT from the Race Type overlay, then configure your game at the Main Menu menu screen, and click RACE.

➡ To be the law, you must choose a pursuit vehicle from the Player Car screen.

HOT PURSUIT NOTE : The **FULL GRID** option is not available on the Opponent Car menu.

Race Types

NFS: High Stakes now offers three unique Hot Pursuit racing experiences.

Classic

The original Hot Pursuit mode. Play as either a cop team or one of two racers. Your goal is to finish the race in first place.

Getaway

New to *NFS: High Stakes*, this is a race for survival. Play as a racer and avoid the police for as long as possible or take control of a cop team to put the speeding vehicle out of action as quickly as possible.

Time Trap

Another new racing mode, “Time Trap” is the toughest challenge of all. As a racer, you must complete the required number of laps in a given time period. However, valuable time ticks off with every ticket you receive. As a cop, you must stop both racers from finishing the race before the timer reaches zero.

- ❑ If you play as the racer and finish any mode in first place or successfully complete a race, you win the “Most Wanted” award for that track. If you play as the police and prevent both racers from finishing a race, you win the “Top Cop” award.

NOTE : Become both “Most Wanted” and “Top Cop” in any one mode to unlock a bonus car.

Multiplayer Hot Pursuit

A Two Player Hot Pursuit race offers a variety of play options. Play on opposite sides of the law in a head-to-head confrontation or team up as police officers or speeders against CPU-controlled opponents. Hot Pursuit can also be played over a TCP or IPX network connection.

NOTE : Single Player Hot Pursuit controller functions are not available in Multiplayer mode.

KNOCKOUT MODE

Knockouts are single-elimination tournaments, beginning with eight competitors. Following each 2-lap race, the last place car is eliminated from the Knockout. The final race is a head-to-head battle between the two surviving cars.

- ❑ You can race in three types of Knockouts—**AMATEUR**, **PRO**, or **CHAMPION**. Pro and Champion Knockouts feature increasingly skilled competition and one or more of the following factors applied to the track: Weather, Night/Day, Mirrored and Forward/Backward.

Knockout Setup

Choose KNOCKOUT from the Race Type overlay, then configure your game at the Main menu and click RACE.

NOTE : All Location menu options are preset for a Knockout race.

NOTE : The **Opponent Car** menu is not available because the remaining **Knockout** entries are computer-generated based on the car class you choose to race.

After a Race

An automatic replay appears, followed by the Race Summary screen after each race.

► *Race Summary Screen* on p. 15.

NOTE : Place first in a **Knockout** to unlock a bonus track.

Multiplayer Knockouts

The Knockout continues as long as at least one human racer remains in contention. Players eliminated from the Knockout can stay in the action by driving a noncompetitive traffic vehicle.

TOURNAMENT MODE

A Tournament consists of a series of six races, each taking place on a different track. Following a tournamentTournament race, check your position on the Tournament Standings screen.

- You can race in three types of tournaments—**AMATEUR**, **PRO**, or **CHAMPION**. Pro and Champion Tournaments feature increasingly skilled competition and one or more of the following factors applied to the track: Weather, Night/Day, Mirrored and Forward/Backward.

Tournament Setup

Choose **TOURNAMENT** from the Race Type overlay, then configure your game at the Main menu,menu, and click **RACE**.

NOTE : You do not have the option to choose a track or number of laps because **Tournaments** take place on pre-scheduled circuits, and they are always four laps long.

NOTE : The **Opponent Car** menu is not available because the remaining **Tournament** entries are computer-generated based on the car class you choose to race.

After a Race

An automatic replay appears, followed by the Race Summary screen after each race.

► *Race Summary Screen* on p. 15.

NOTE: Place first in a Tournament to unlock a bonus car.

Multiplayer Tournaments

Multiplayer Tournaments consist of eight 2-lap races.

LOADING SAVED GAME FILES

Access the Load menu to load saved game files. From the Load menu, you can resume Knockouts and Tournaments in progress, view replays, and race against your previous performances.

⇒ To access the Load menu, click LOAD from the Game Setup menu.

To load a file:

1. Click the type of file you want to load: **REPLAYS**, GHOSTS, KNOCKOUTS, or TOURNAMENTS. The list of saved files appears.
2. Select the file you want to load, then click LOAD and get ready to race. As soon as the file loads, you're at the starting line for the next event.

To delete a file:

1. Click the type of file you want to delete REPLAYS, GHOSTS, KNOCKOUTS, or TOURNAMENTS. The list of saved files appears.
2. Select the file you want to delete, then click DELETE. The file is deleted.

MULTIPLAYER RACING

Race head-to-head against a friend on one computer in Split Screen Arcade mode, link two computers together for Modem and Serial link racing, connect up to eight computers over a Network, or race against up to seven other players over the Internet.

NOTE: If you have trouble establishing a link between computers, see the enclosed Reference Card.

SPLIT SCREEN ARCADE RACES

Two players can race on one PC in Split Screen mode. Both players can share the keyboard if necessary, but we recommend that one player use an alternate controller such as a joystick for best results.

- In Split Screen mode, menus such as Player Car and Player Name have settings for Player 1 and Player 2.
- In Split Screen mode, the Controls menu adds a column for Player 2's controls. The defaults are as follows (note that Player 1's controls are different than they are in Single Player mode):

ACTION	PLAYER 1	PLAYER 2
Steer left/right	← / →	G / D
Accelerate	↑	R
Accelerate	↑	R
Brake	↓	F
Brake	↓	F
Handbrake	INS	SPACEBAR
Shift gears up/down	PAGE UP / PAGE DOWN	A / Z
Cycle camera views	K	Q
Horn (Siren in Hot Pursuit mode)	M	W
Look behind	HOME	E
Reset car	END	X
Lay spike strip (Hot Pursuit mode)	P	S
Cycle lights ON/HIGHBEAMS/OFF	L	Y
Look left/right	, / .	C / V

NOTE: Hot Pursuit specialty controls are not available in Multiplayer modes.

NETWORK (IPX)

If you have access to an IPX network (LAN), you can host or join network games of up to eight NFS: High Stakes drivers.

To begin a Network (IPX) race:

1. From the Game Setup menu, select CONNECT PLAYERS... The Connect Players menu appears.

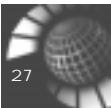
2. Select NETWORK (IPX). The current games list appears.
3. Choose CREATE GAME to host a Network game, or select a game from the current games list and click JOIN GAME to be a client in a game.
 - The host is prompted to enter a name and configure network settings for data transfer and data updates.
 - Choose **CLIENT/SERVER** for network games with more than two players or PEER-TO-PEER to optimize data transfer for two-player games.
 - The Updates option configures data transfer over the network. **CONTROLLER** updates are best for fast, local area networks. **POSITIONAL** updates are better suited for slow network connections.
4. Make your data choices, then click OK. The Multiplayer screen appears. (► p. 25.)

NETWORK (TCP)

If you have an IP address and access to a TCP network, you can link with up to eight computers for multiplayer racing.

To begin a Network (TCP) race:

1. From the Game Setup menu, select CONNECT PLAYERS... The Connect Players menu appears.
2. Select NETWORK (TCP), then choose to HOST or JOIN the game.
 - The host is prompted to enter a name and configure network settings for data transfer and data updates:updates.
 - Choose **CLIENT/SERVER** for network games with more than two players or PEER-TO-PEER to optimize data transfer for two-player games.
 - The Updates option configures data transfer over the network. **CONTROLLER** updates are best for fast, local area networks. **POSITIONAL** updates are better suited for slow network connections.
 - If you are joining a game, type the IP address of the host computer, then click OK.
3. Make your data choices, then click OK. The Multiplayer screen appears. (► p. 29.)



INTERNET

Connect to **www.earacing.com** for EA's beta release of its online matchmaking service to connect players around the world. You must have a connection to the Internet to access EARacing.com.

1. From the Game SetupMenu screen, select CONNECT PLAYERS. The Connect Players menu appears.
2. Select EARACING ONLINE.

MODEM

Two computers can connect via modem for two player racing.

1. From the Game Setup menu, select CONNECT PLAYERS... The Connect Players screen appears.
2. Select MODEM... Then choose whether to DIAL or ANSWER a call. The computer that answers the call is the host.
 - If you are making the call, type the modem number of the host computer, then click OK.
3. If you are hosting the game, you must choose whether the game is **PEER-TO-PEER** or CLIENT/SERVER and whether it has POSITIONAL UPDATES or **CONTROLLER UPDATES**, then click OK. The Multiplayer screen appears. (► p. 29.)

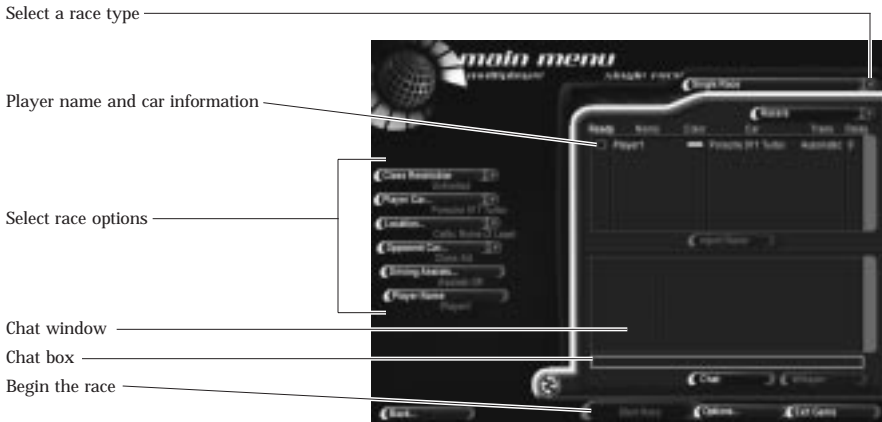
SERIAL LINK

In this mode, two PCs are linked via a serial cable for head-to-head action.

1. From the Game Setup menu, select CONNECT PLAYERS... The Connect Players screen appears.
2. Select SERIAL... the Serial Connection menu appears.
3. Check the com port number displayed on the screen. If this is correct for your serial cable, click CONNECT. The Multiplayer screen appears. (► p. 29.)
 - To cycle to the correct com port, click COM PORT.

MULTIPLAYER MAIN MENU

The Multiplayer Main menu is similar to the standard Main menu screen (► p. 4). This is where you set up the race and chat with your opponents before you begin.



Although the host is responsible for setting up the multiplayer race, clients can communicate their suggestions via the chat window.

- To chat, type a message, then press **ENTER** to send. The message, labeled by your name, appears in the chat window.
- Clients have minimal control on the Multiplayer screen. They may only configure their cars and enter their names.
- When a client is set to race, s/he clicks **READY TO RACE**. The red signal next to the client's name turns green indicating that s/he is good to go.
- When all clients are ready, the host clicks **RACE**. The game loads, the computers sync up, and the race starts.

HOT KEYS

Pause race	[ESC]
Hide Pause menu	[F1]
Rotate Pause camera left/right	[F2]/[F4]
Stop Pause camera rotation	[F3]
Toggle on-screen gauges (Player 1/Player 2) ON/OFF	[F5]/[F6]
Toggle rearview mirror ON/OFF	[F7]
Toggle music ON/OFF	[F8]
Toggle sound FX ON/OFF	[F9]
Toggle cop scanner ON/OFF	[F10]
Reduce/Expand window	[F11]/[F12]

CREDITS

DEVELOPMENT DIRECTORS

Development Director: Joel Lueders

Senior Development Director: Mike Mathisen

PRODUCTION

Producer: Mark Madland

Associate Producer: Mark Coates

Online Producer: Jim Edmonds

Assistant Producers: Ragnar Lindstrom,
John Petrick, Brian Taney

Production Assistant: Alex Pantelias

Executive Producer: Sam Nelson

Senior Producer: Hanno Lemke

PROGRAMMING

Lead Programmer: Sam Deasy

Programmers: Peter Andrew, Dan Berke,
Doug Deardorff, Greg D'Esposito,
John Fawcett, Jim Hall,
Michael Lankerovich, Gordon Ludlow,
Wes Potter, Anne Sullivan, Chuck Walters,
Ted Zuvich

ARTISTS

Senior Art Adviser: David Bollesen

Lead UI Artist: Dave McCormack

Lead Track Artist: Jim Tibbitts

Lead Car and Cockpit Artist: Ryan Blinsky

Artists: Andrew Baker, James Becker,
Jeff DuLong, Kevin Gee, Layne Gifford,
Harley Howe, Phil Howe, Jeff Hydorn,
Rob Johnson, Razvan Neagu,
Jason Rappaport, Kevin Ring,
Drew Robertson, Aaron Rose,
Stefan Schwartz, Scott Thurman,
Eugene Wong, Robert Adams,
Eduardo Agostini, Sheila Allan,
Garth Buzzard, Simon Craghead, Paul Goad,
Curtis Hoines, Laurie Kindiak,
Anthony Leonati, Robert Sculnick

QA

QA Coordinator: Caesar Filori

QA Lead: Mike Cody

QA Assistant Leads: John Largis, Josh Reynolds

QA Testers: DaYve Blumberg, Jesse Brocksmith, Kristine Bryan, Allen Burkhart, Tony Case, Brian DeVerter, David Drury Allen, J Galloway, Michael Gills, Joseph Keating, Ed Miller, Shawn I. Neal, Henry Pak, Blair Peters, Kate Powell, Raul Rodriguez, Diana Schiefelbein, Jonny Steward, Patrick Swift, Tim Zoch

QA Technician: Justin Phipps

QA Mastering: Wyeth Orestes Johnston

AUDIO

Lead Audio: Robert Ridihalgh

Sound Design Seattle: Jay Weinland, Matt Ragan, Robert Ridihalgh, Alistair Hirst

Sound Design Vancouver: Crispin Hands, Saki Kaskas, Andy Teal, Rom Di Prisco

Music Compositions: Rom Di Prisco, Saki Kaskas, Crispin Hands, Robert Ridihalgh

Mix Engineer: Hiwatt Marshall

Music Consultants: The Forster Brothers for Tuff Break Entertainment

Music Editing and Mastering: Rom Di Prisco

Speech Engineer and Senior Editor: Jennifer Lewis

Speech Editors: Olo, Phil Giborski, Lori Wilson, Jeremy Cook

Audio Libraries: Iain Macanulty, Dave Mercier

Speech Scripts and Layouts: Robert Ridihalgh, Mark Coates, Brooke Burgess, Tony Whitney

Music Licensing: Beverly Koeckeritz

Music Supervisor: Jonnie Forster

Special Thanks: EARS Hitmen group working on PGA for supplying us with a ton of trees.

ADDITIONAL RESOURCES

Manual Writers: Anthony Lynch, Jamie Poolos

Web Development and Design: Scott Zimble

Public Relations: Jeane Wong

Product Manager: Peter Royea

Photography: Diego Cassetta, Rob Newell, Benedict Redgrove, Werner Deisenroth – Sirius Studios

Localization Producers: Gaar Lindstrom, Serena Whitters, Arlaine Walker

Licensing Coordinators: Mark Coates, Joel Lueders, Serena Whitters

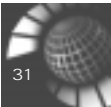
Opening Video Sequence: Equinox Digital Entertainment

Graphic Artists: SHEN Technologies

Customer Quality Control: Michael Parker, Benjamin Crick, Anatol Somerville, Jacob Fernandez

© Chet Hanchett/ Panoramic Images, Chicago 1998

© First Light/ Panoramic Images, Chicago 1998





WARRANTY INFORMATION

Need Technical Support? Please see the enclosed Reference Card for technical support information.

Need Gameplay Help? Call EA's HINTS & INFORMATION HOTLINE for recorded hints, tips, and passwords 24 hours a day, 7 days a week!

In the US, dial 900-288-HINT (4468). 95c per minute.

In CANADA, dial 900-451-4873. \$1.15 (Canadian) per minute.

If you are under 18, be sure to get a parent's permission before calling. Hotline requires a touch-tone telephone. Call length determined by user; average length is four minutes. Messages subject to change without notice.

In Australia: For Technical Support and Game Hints and Tips, phone the EA HOTLINE: 1 902 261 600 (\$1.50 per min.) CTS 7 days a week 10AM-8PM.

If you are under 18 years of age parental consent required.

ELECTRONIC ARTS LIMITED WARRANTY

Electronic Arts ("EA") warrants to the original purchaser that this product is free from defects in materials and workmanship for a period of 90 days from the date of purchase. Electronic Arts is not liable for any losses or damages of any kind resulting from the use of this product. If the product is found to be defective within the 90-day warranty period, Electronic Arts agrees to repair or replace the product at its option free of charge.

This warranty shall not be applicable and shall be void if the defect in the product is found to be as a result of abuse, unreasonable use, mistreatment or neglect.

LIMITATIONS

This warranty is in place of all other warranties and no other representations or claims of any nature shall be binding on or obligate Electronic Arts. Any implied warranties applicable to this product, including warranties of merchantability and fitness for a particular purpose, are limited to 90-day period described above. In no event will Electronic Arts be liable for any special, incidental, or consequential damages resulting from possession, use, or malfunction of this Electronic Arts software product.

Some states do not allow limitation as to how long an implied warranty lasts and/or exclusions or limitations of incidental or consequential damages so the above limitations and/or exclusions of liability may not apply to you. This warranty gives you specific rights, and you may also have other rights that vary from state to state.

RETURNS WITHIN 90 DAY WARRANTY PERIOD—Please return the product along with a copy of the original sales receipt, showing the date of purchase, a brief description of the difficulty you are experiencing including your name, address, and phone number to the address below. If the product was damaged through misuse or accident, this 90-day warranty is rendered void and you will need to follow the instructions for returns after the 90-day warranty period.

We recommend that you send your product using a delivery method that is traceable.

RETURNS AFTER THE 90-DAY WARRANTY PERIOD—Please return the product along with a check or money order for \$7.50 made payable to Electronic Arts, a brief description of the difficulty you are experiencing including your name, address, and phone number to the address below.

We recommend that you send your product using a delivery method that is traceable.

Electronic Arts Customer Warranty

P.O. Box 9025

Redwood City, California 94063-9025

If you have warranty questions, you can also contact Customer Warranty via e-mail at cswarranty@ea.com or by phone at (650) 628-1900.

NOTICE

Electronic Arts reserves the right to make improvements in the product described in this manual at any time and without notice.

This manual and the software described in this manual are copyrighted. All rights are reserved. No part of this manual or the described software may be copied, reproduced, translated, or reduced to any electronic medium or machine-readable form without the prior written consent of Electronic Arts.

Software and documentation © 1999 Electronic Arts. All rights reserved.

Need For Speed, Electronic Arts, and the Electronic Arts logo are trademarks or registered trademarks of Electronic Arts in the U.S. and/or other countries. All rights reserved.

Aston Martin DB7 used under license from Aston Martin Lagonda Limited.

BMW, Z3, and M5 are trademarks of BMW AG. BMW car materials (c) 1999 BMW AG. All rights reserved.

Ferrari, Ferrari F50 and Ferrari 550 Maranello, all associated logos, and the Ferrari F50 and Ferrari 550 Maranello distinctive designs are trademarks of Ferrari S.p.A.

Chevrolet, Corvette, Camaro, Z28, Firebird, T/A, Caprice, Pontiac, Emblems and Vehicle Model Body designs are General Motors Trademarks used under license to Electronic Arts Inc.

The word "Jaguar", the leaping cat device and the character "XKR" are trademarks of JAGUAR CARS LTD., ENGLAND and are used under license.

Automobili Lamborghini, Diablo SV, and all associated logos are trademarks of Automobili Lamborghini S.p.A.

McLaren, McLaren F1 GTR, and all associated logos are trademarks of McLaren Cars N.V.

"Mercedes", "Mercedes Benz", "CLK" and "SLK" are trademarks of Daimler-Benz AG.

Licensed from Dr. Ing. h.c.F. Porsche AG under certain Patents. "Porsche" and "911" are registered Trademarks of Dr. Ing. h.c.F. Porsche AG.

Lister and Lister Storm are trademarks of LISTER. Some images of the Lister Storm © 1998 LISTER. All rights reserved.

Scighera, ITALDESIGN, and all associated logos are trademarks of ITALDESIGN S.p.A. All rights reserved.

Spectre, Spectre R42 and Spectre R45 are trademarks of SPECTRE. Some images of the Spectre R42 and the Spectre R45 © 1998 SPECTRE. All rights reserved.

Dolby and the double-D symbol are trademarks of Dolby Laboratories.

All other trademarks are the property of their respective owners.